



**Planet Builders & Interiors**  
We put spark in your project.

# PLANET BUILDERS & INTERIORS

WE PUT SPARK IN YOUR PROJECT

# WELCOME TO OUR COMPANY

Planet Builders was formed in **2013**. The company has experience in many projects including private residential, multi-storey commercial projects, offices as well as farm houses.





## What Do you know about our company?

Planet Builders & Interiors is a progressive Construction practice providing high quality Construction & Designing services for both the domestic and commercial sectors. We are committed to low energy sustainable construction providing appropriate, imaginative, cost effective and technical solutions to meet our client's individual requirements. We implement and manage our input into each project to the highest professional standards, meeting with our clients requirements with clear communication throughout the project.





# SERVICES

- Renovation
- Map Consultancy
- Interior Designing
- Grey Structure
- Turnkey Solutions
- Structural Consultancy
- Town Planning
- Landscaping
- Calligraphy

# OUR ASSOCIATION

## PEC

- Pakistan Engineering Council

## IAP

- Institute of Architects of Pakistan

## PCATP

- Pakistan Council of Architects & Town Planners

## LCCI

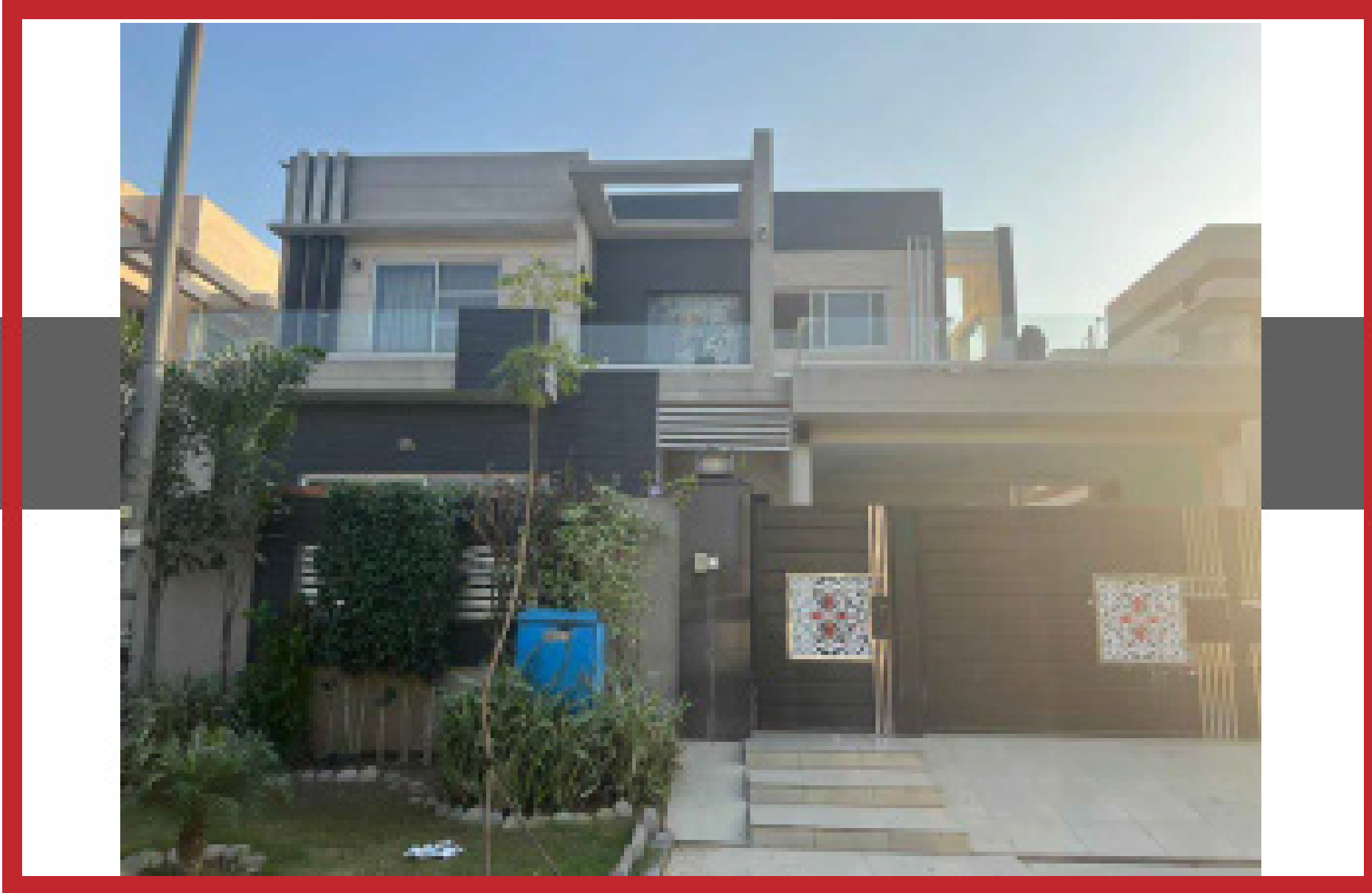
- Lahore Chamber of Commerce & Industry

# PORTFOLIO GALLERY



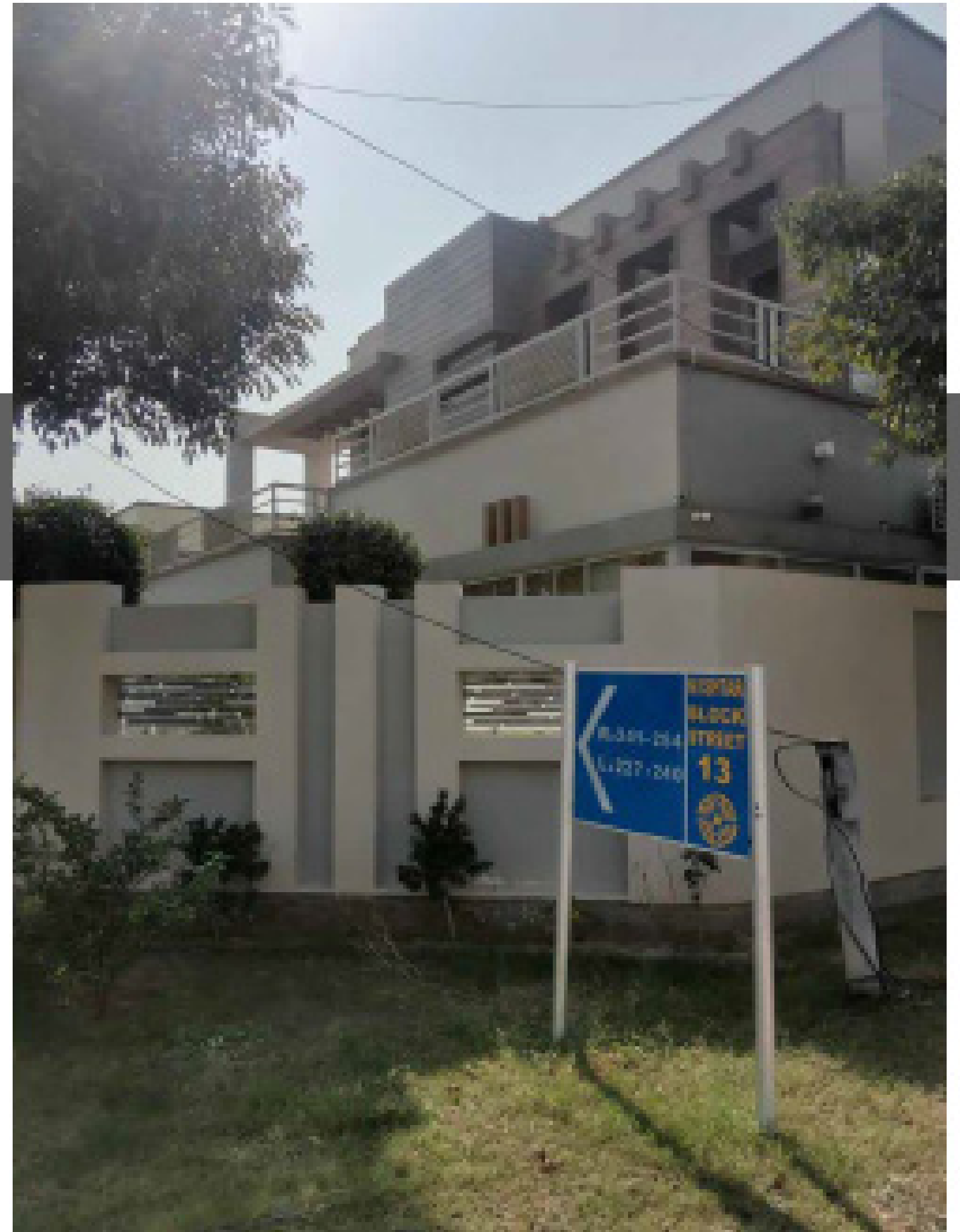
# PLANET BUILDERS

CONSTRUCTION & DESIGNING SERVICES

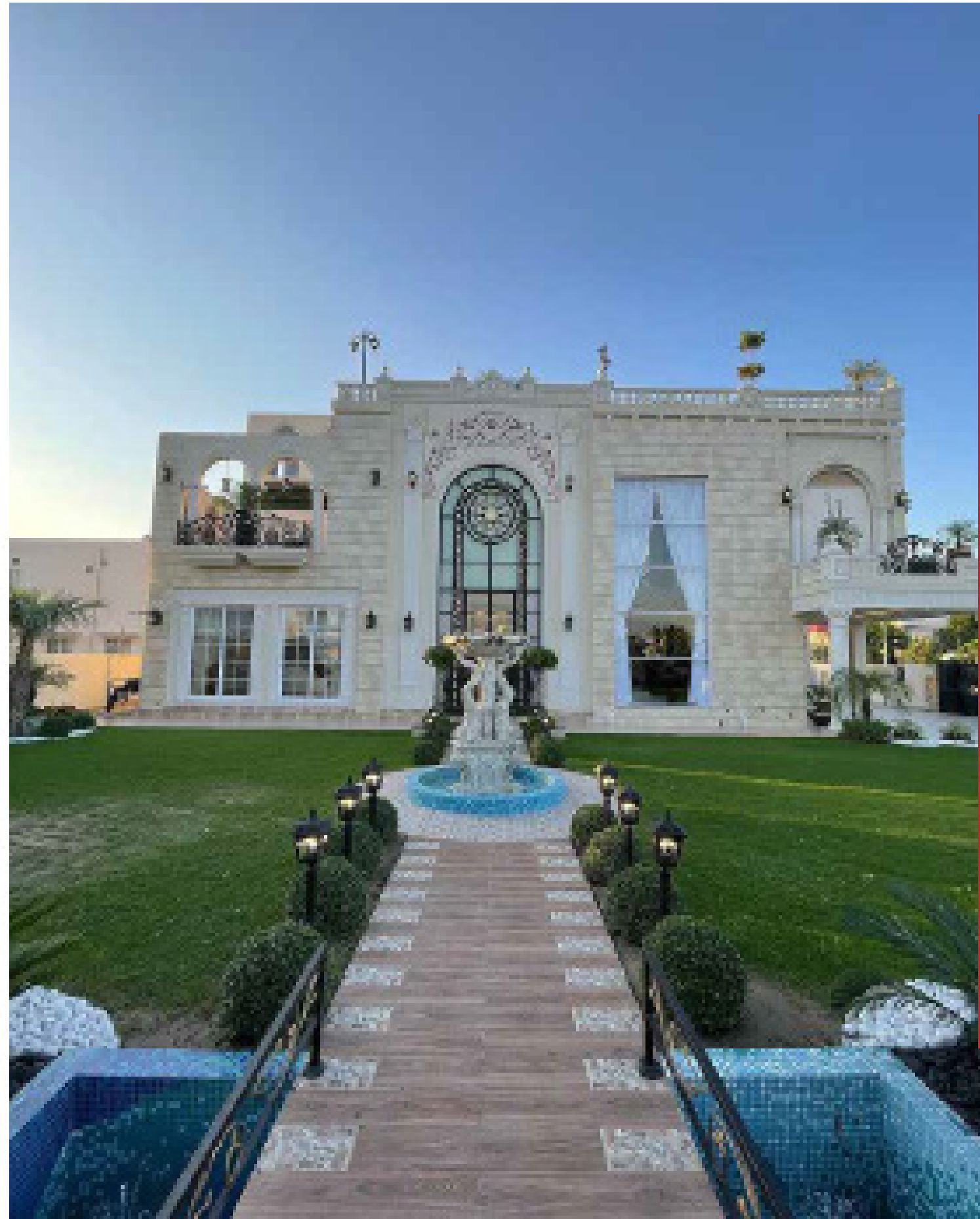






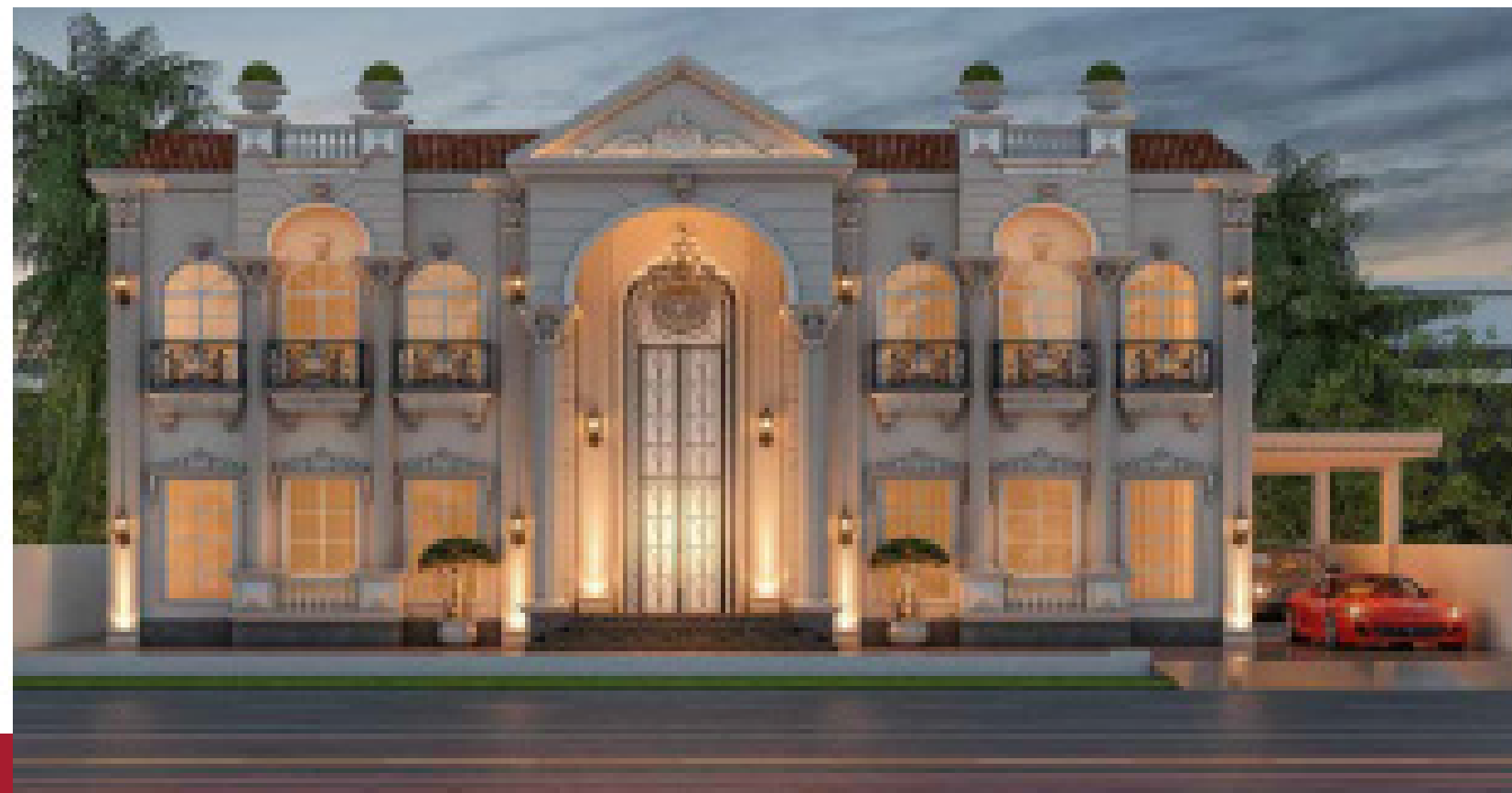












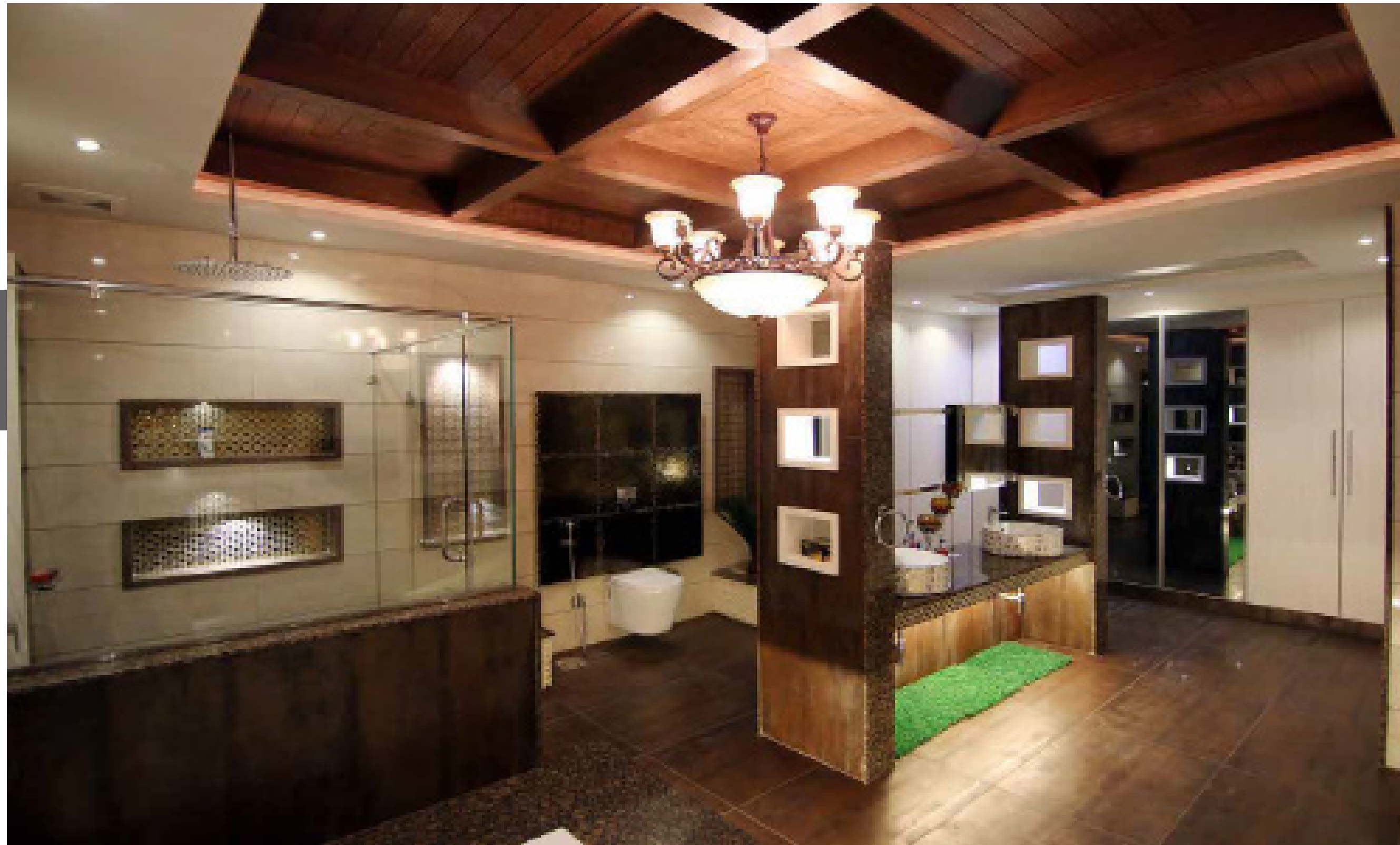




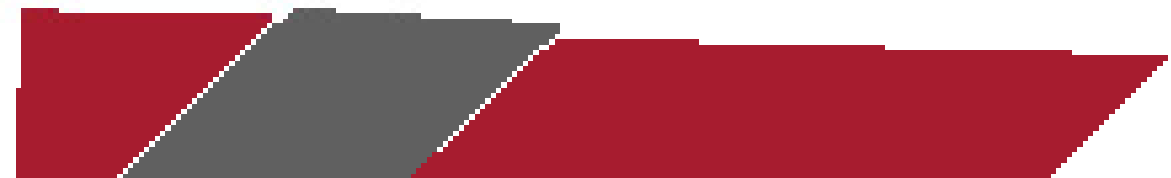


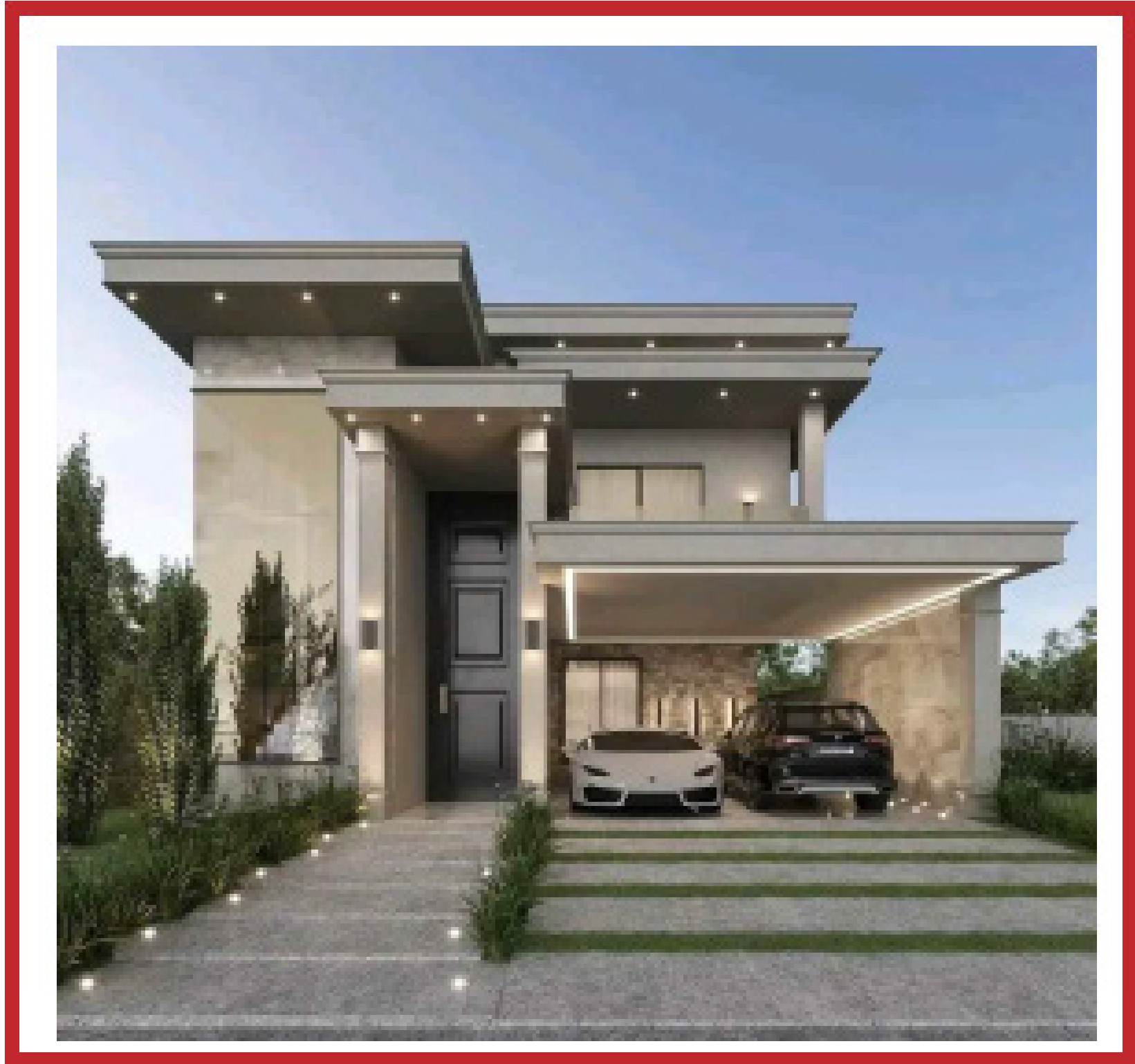










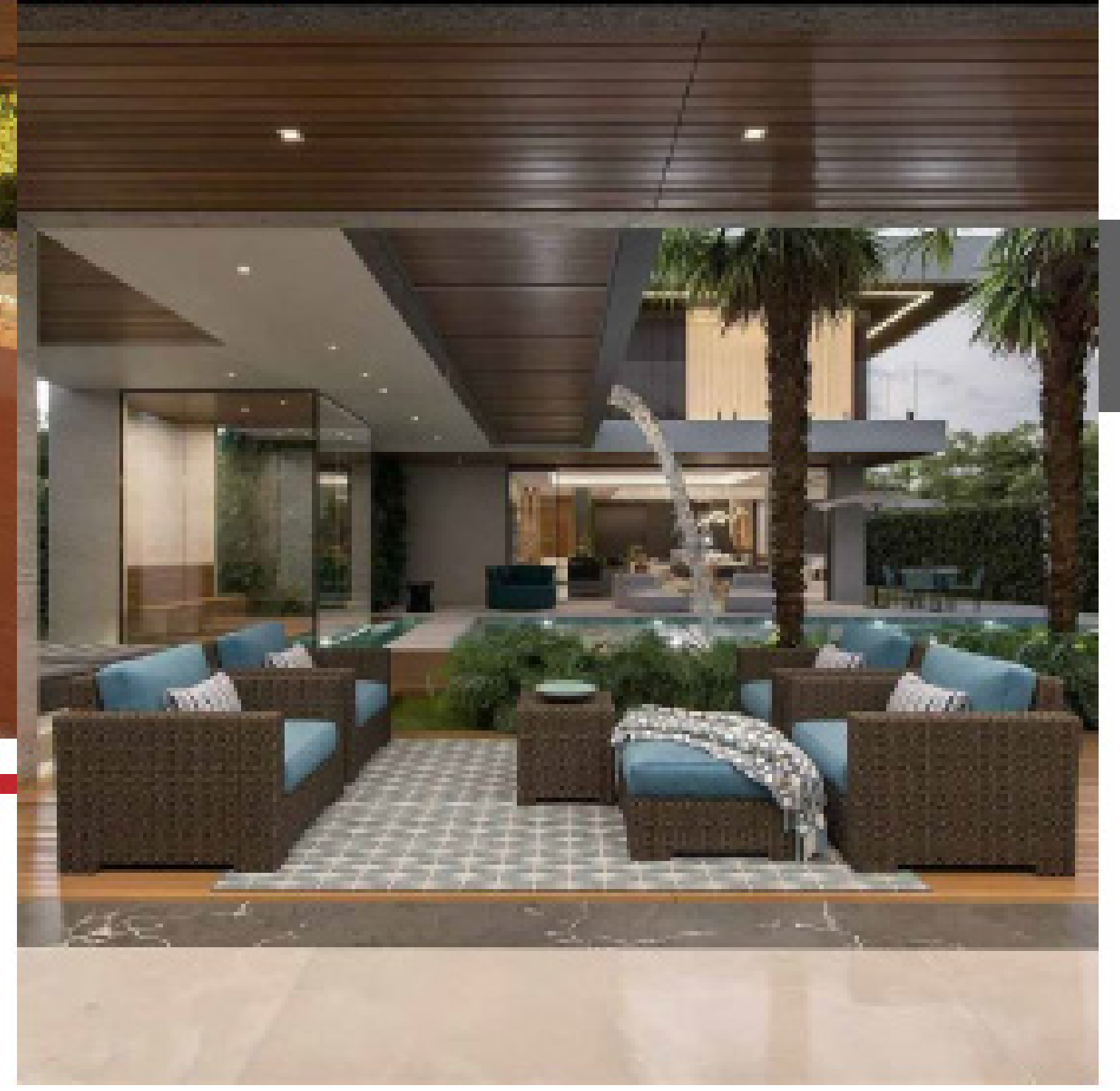


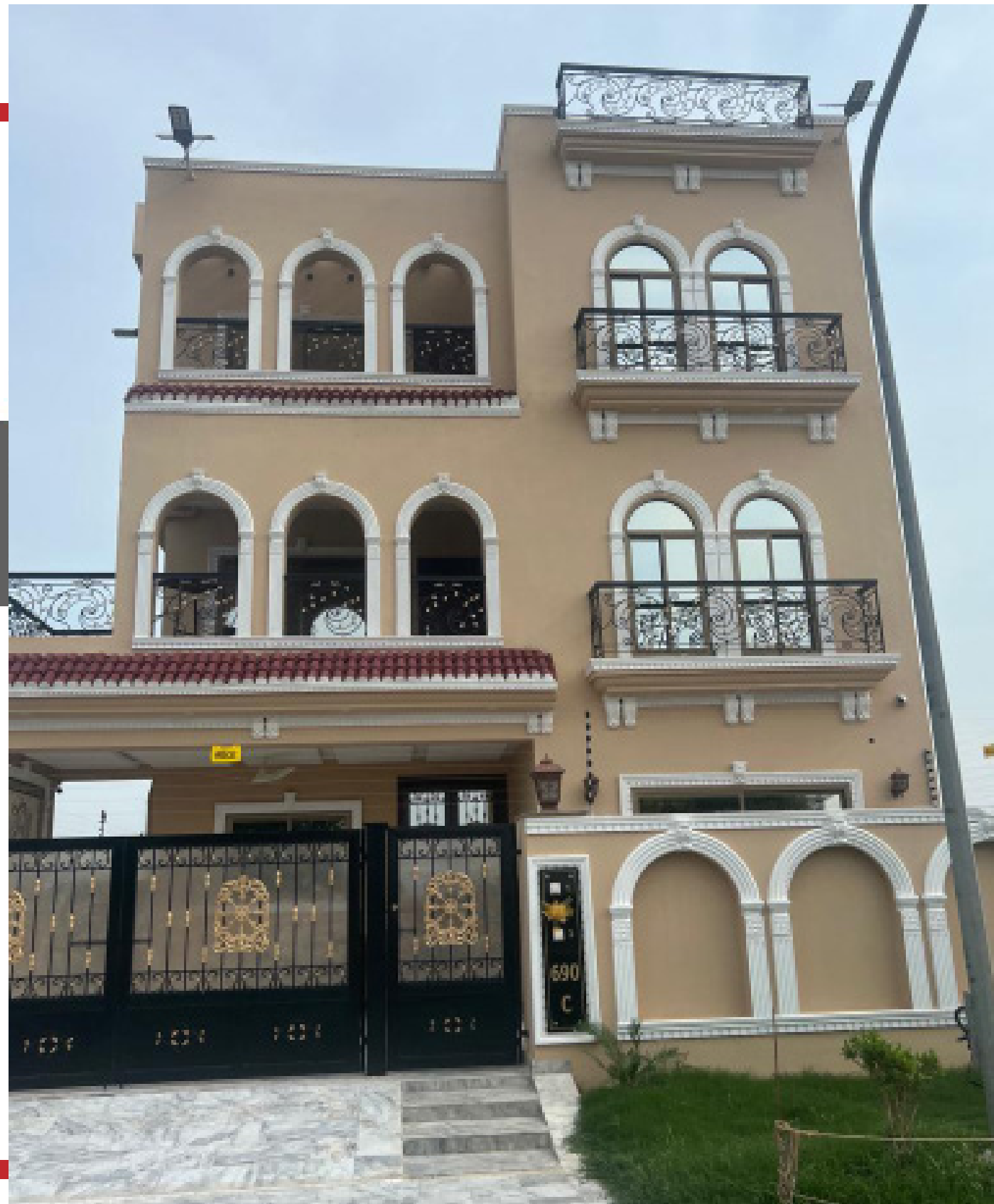
























A photograph of a modern, multi-story building at night. The building features large glass windows and balconies, some of which are illuminated from within. The sky is a deep blue, and the building's lights create a warm glow. In the top right corner, there are decorative geometric shapes in red and grey.

## Contact Us

0305-45 822 89 , 0332-466 42 43

[www.planetbuilderss.com](http://www.planetbuilderss.com)

**Thankyou**

A photograph of a modern building at night, similar to the one in the top image. The building is illuminated, and the foreground shows a parking area with a railing and some landscaping. The sky is dark, and the building's lights are prominent.

**Address: Site Address 46-B, Lane#3 Overseas Prime Lahore Smart City**